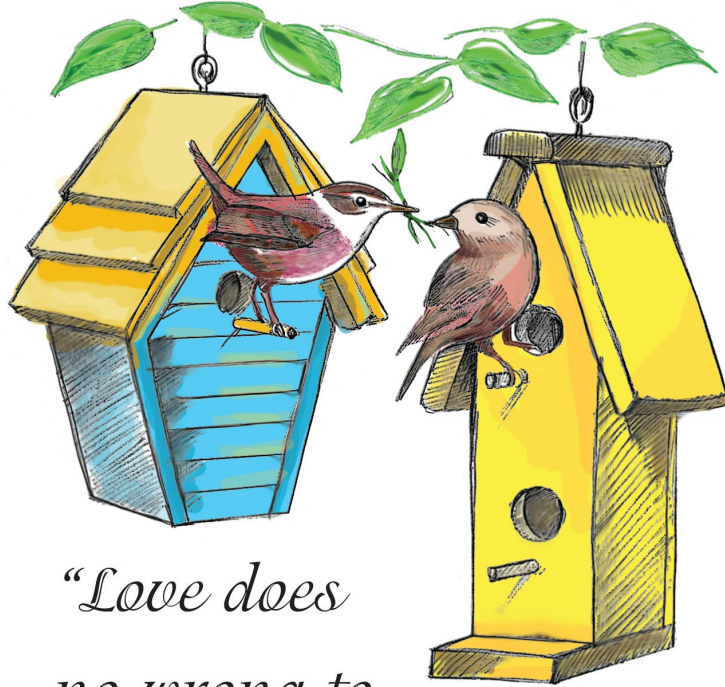


THE WAYSIDER

VOLUME 84, NUMBER 2

February 2012



*“Love does
no wrong to
a neighbor; therefore,
love is the fulfilling
of the law.”* Romans 13:10, NRSV

Worship	9:30 A.M.
Sunday School (Every Sunday except the 1st Sunday of the month)	9:30 A.M.
Family Sunday	1st Sunday of the month
Coffee Hour	10:30 A.M.
Office Hours; Monday—Friday	9:00 A.M. to 1 P.M.
Office Phone	627-2150
Church E-mail	waysidechurch@hotmail.com

WAYSIDE’S MISSION IS TO . . .

*“Reach out and bring people to meet, know, and follow Jesus.”
“A Broad, Inclusive Faith Church”*



Prayer

Prayer is broad topic! Entire sections of theological libraries are devoted to prayer. It plays a central role in worship. We open and close meetings with prayer. It is part of caring for others - we pray with them and for them. At its core, prayer is a form of communication. It is the term we use for communicating with God.

Prayer has many forms. Sometimes we are silent and centered. Sometimes we sing our prayers. Central to prayer, but often forgotten, is listening.

Prayer is not a monologue but a dialogue. We express to God and listen for God's expressions to us. Every "Oh God" and "OMG" is a prayer. The ease with which we cry out to God would suggest we are very prayerful people! Or that we use God's name without thought or reverence. Prayer is intentional communication with God.

On Wednesday evenings during Lent, we will experiment with prayer. We will try on a few different forms. We will learn to pray with body, mind and soul. First we will gather for a soup supper and listen to presentations on praying with our bodies. Then we will experiment - we will try a little of what is presented to us. This may include walking an indoor labyrinth, yoga and meditation, reiki, liturgical dance, tai chi, or other forms of prayer in motion.

The goal of our experiment is to move prayer out of our heads. Rather than an exercise in thought, prayer is an exercise of spirit. Sometimes we have to move our bodies to loosen up the spirit. There is no perfect form of prayer and there are no limitations to praying. A beginning step is attending to our breathing - pay attention to the inhale and exhale. An Old Testament word for God is Yahweh, spelled YHWH. It's interesting that saying the word YHWH is an exercise in breathing. Try it: inhale on the first syllable Yah- and exhale on the second syllable Weh. To be present to God, focused and listening, we have only to call upon the name of God - YHWH - with our breath.

Each one of the forms of prayer we will try throughout Lent encourages us to attend to our breathing. It is a gauge of our anxiety. If we can loosen the tightness of our shoulders and chest, we are more open to the Spirit. I hope you will come on Wednesday evenings for a *Soup Supper and Lenten Learning Program* with body, mind and soul!

Peace,
Pastor Amy

FEBRUARY LECTIONARY

DATE	1ST READING	PSALM	2ND READING	GOSPEL
2/5/12	Isa. 40:21-31	Ps. 147:1-11, 20c	1Cor. 9:16-23	Mark 1:29-39
2/12/12	2 Kings 5:1-14	Ps. 30	1 Cor. 9:24-27	Mark 1:40-45
2/19/12	2 Kings 2:1-12	Ps. 50: 1-6	2 Cor. 4: 3-6	Mark 9:2-9
2/26/12	Gen. 9: 8-17	Ps. 25: 1-10	1 Peter 3: 18-22	Mark 1: 9-15



CREDIT CARD DONATIONS

If you have a monthly credit card charge set up with the office for your giving, please watch your mail for a 2012 Credit Charge Form.

If you would like to sign up and have your credit card charged monthly for your giving, please call Julie in the office.

VISA, MASTERCARD AND DISCOVER ACCEPTED ANYTIME.

Stop in Monday-Friday to make a donation or call the office at 627-2150.

MONTH OF DECEMBER 2011

Total **Receipts**: \$ 19,290.41
Total **Expenses**: \$ 15,445.75

Cash on hand as of **1/27/12**: \$ 62,134.23
Family Relief: \$ 1,475.50
Sanctuary Renovation: \$ 10,923.40
Total available for general expenses: \$ 49,735.33

Cash on hand as of **1/27/11**: \$ 49,020.81
Family Relief: \$ 2,062.32
Sanctuary Renovation: \$ 7,110.40
Total available for general expenses: \$ 39,848.09



ANNUAL REPORTS

Copies of the Annual Report are available. You can pick up a copy on the Amsdell Road table or give the office a call and we'll make sure to get one to you.

Average attendance for **December 2011**
166 people (3 Sundays and 2 services on Christmas Eve.)
Average attendance for **December 2010**
149 people (4 Sundays and 2 services on Christmas Eve.)



After our dad passed away on December 15th, we received many cards and condolences. We are so grateful for all your kind words and prayers.

The family of Richard Weimer



PRAYER SHAWL MINISTRY

The prayer shawl group continues to meet the first Wednesday of the month at 10AM in Room 110. They join the quilters for lunch. Everyone is welcome to attend.



COMMUNION SERVERS FOR FEBRUARY 5TH

- *Kim Carlson
- Joan Kelly
- Debbie Tyler
- Bonnie Moran
- Debbie Chavel
- Mark Chavel

ASH WEDNESDAY, February, 22, 2012

- Ray Wise
- Audrey Wilson

YOU KINDNESS MEANS SO MUCH!

Ray Wise wants to thank everyone for all the kindness, thoughts, prayers and love that was shown to him and Fran while he was recuperating.



BLOOD PRESSURES

Blood pressures are taken in the church office after the 9:30 AM service on the first Sunday of the month. Stop in and check out yours.



THOUGHTS

If you have "thoughts" you would like to share with the congregation, please submit them to the office by the 14th of the month for the next month's issue of the Waysider.



St. Stephen's Ministers
One on one. One to one. One with one.
Confidentially.



Call it Friendly February or Family February or Fellowship February. In the old days the harvest would have been gathered and the spring planting still a long way off. The outside is cold and windy and dark early. Time to settle in and relax a little. Time to appreciate the gentle offerings of warm hearth and home and neighbor and friend. Time to offer a little more patience and kindness to those we love and to express more directly how we feel to those closest to us. (Remember Valentine's Day.)

Remember too that we are under the command of God to love ourselves. Make the time, in these dark and short days, be gentle and kind and patient and forgiving to you. A warm fire, a good book, a hot cup of tea or just time to sit and enjoy a favorite snack. Be good to yourself as a new cycle of life begins to unwind. It's a good time of year to take an evening and visit with an old friend and talk over coffee, or get the family together for a game night, or hunker down in the rocker and talk with the spouse.

We are, each of us with our strengths and weaknesses, in this life, in this year together.

Wayside is a good place to meet and greet and practice extending a little more gentleness and kindness to yourself and others. A good place to practice expressing outwardly one's joys and sorrows. A good place to learn how to listen better and forgive more.

And Wayside has a good share of Stephen ministers, seek and you will find them, who would gladly walk along or just sit with you as a friend to fellowship on a dark, windy cold day.

SOME THOUGHTS...

It may be true that the willing horse gets the heaviest load; but he also develops the strongest muscles and gets the most oats....old farmer's truth.

The most difficult mathematics to learn is the art of counting our own blessings.

WAYSIDE 4 HABITAT

Looking back on this past year makes me truly appreciate the spirit of volunteerism for Mission at Wayside. Early in the year, I was feeling that perhaps this mission had run its course and that Waysiders had tired of our Habitat excursions. However, by year's end, you came roaring back to volunteer in strong numbers. In December 2011, even though we met, but did not exceed, our previous high number of 13 participants at one outing, we did achieve a different milestone; December was the first time that four women joined us on the same day! I certainly hope this is a new trend!

So, I wish to thank all of you who have made this mission possible by your selfless participation in the past and, I hope that each of you might consider joining us in the future. I also hope that you might spread the good word about the fun you had, or how fulfilling it was, to other Waysiders, and to others you know outside the church. We actually have several Habitat "regulars" who don't even attend our church! I further hope that some of you, who have been thinking of joining us, will finally do so this coming year.

For those of you who like to plan ahead for your activities, here are the Habitat outing dates for 2012 (they are all Saturdays): March 3rd, June 2nd, September 8th, December 1st. Please circle these dates on your new calendars and consider joining our fun, eclectic group in the future.

Sincerely
Bob Hurd

**NEW SAMARITAN COUNSELING CENTER SATELLITE
TO OPEN AT
ST. PAUL'S EPISCOPAL CHURCH IN ANGOLA**

The Lake Shore Area of Christian Churches (LSACC) in partnership with Samaritan Counseling Center (SCC) of Western New York, announce the opening of a new satellite Counseling Center in Angola, New York. The new Samaritan Counseling Center Satellite will be located at St. Paul's Episcopal Church, 930 Lake St. Angola, NY 14006.

The Samaritan Counseling Center provides professional, confidential counseling and mentoring for individuals, couples, children, families and clergy in a spiritual, faith-oriented context. In addition, the Center provides consultations, training, workshops, and educational programs for physicians, clergy, agencies, congregations, and groups and provides training for pastors and lay people through its Certified Pastoral Education program.

The Samaritan Center is an ecumenical group and offers counseling at thirteen locations throughout Western New York. It is accredited by the Samaritan Institute in Denver Colorado and the Samaritan Counseling Center of Western New York, one of 91 Centers, is the oldest Samaritan Counseling Center in the US and Japan, having begun operations in 1959.

To make an appointment to meet with one of the counselors or Spiritual Mentor, please call 743-9117. Visit the Center at www.SCCWNY.org

PRAYER REQUESTS: *(If a person has stabilized, please contact the office. After 60 days, names will normally be removed.)*

WAYSIDERS

Ginny Lietz
Waltraut Couchman
Sylvia Couchman
Carol Rechlin
Pearl Romanowich
Jack Panfil
Panfil Family
Bev Stewart
Joyce Smerka
Arlene Marshall
Audrey Wilson
Laura Wrobel
Gerard Smerka
Sue Whelan
Martha Houck

WAYSIDE FRIENDS

Mike Story
Henry Carey
Ryan Nurmi & family
Keri Lichon
Tom Jasinski, Jr.
Todd Euler
Brian Newbigging
Wendy Jewart
Jordan Roth
Pamela Chen
Tara Irish
Jeff Hardy
Rich Butera
Tasha Oliveri
Dennis Daley
Michelle Cyrek
Fran Bujanowski
Jan Howell
Scott Miller

Steven Rohan Family
Mayson Grace Mullen
Soyka family
Taylor family
Rudolph Bucheit
Lynn Tellmann
Ola Just
Shelly Jones
Tammy Fricano
Summer Rose Schohn
Chester Sutcliffe
Ethan Johnston
Gates Family
Jackie Wenglik & family
Mary Leonetti
Patty Bough
Barb Gorski
Jim Jabcuga
Donna Westbrook
Patty Kurzara




FEBRUARY BIRTHDAYS

- 2 Mary Gregory
- 5 Karen Lake
- 6 Shirley Vandepoll
- 7 Bonnie Moran
- 8 Mitchell Carlson
- 8 Virgina Lietz
- 10 Pearl Romanowich
- 10 Monica Disare
- 12 Nancy Schoellkopf
- 12 Joseph Fasciana
- 16 Ben Pyne
- 17 Bev Tyler
- 19 Jerold Leigh
- 21 Sue Dye
- 23 Debbie Tyler
- 24 Maria Lake
- 26 Robert Zerby, Sr.
- 28 James Zydel



NURSERY HOURS



Miss Barb & Miss Joanne are in the Nursery every Sunday from 9:20 AM until the end of the service. Please pick up your children before Coffee Hour.
(For infants and toddlers through age 3)



LIBRARY NEWS by Karen Peiffer

Paul wrote to Timothy, “When you come, bring the cloak that I left with Carpus of Troas, also the **books**, and above all, the parchments.” **2 Timothy 4:13**

Spurgeon wrote of Paul, “He was inspired, and yet he wants books! He has been preaching for thirty years, and yet he wants books! He has seen the Lord, and yet he want books! He has a wider experience than most men do, and yet he wants books! He had written the major part of the New Testament, and yet he

wants books! (Barton: 100 Great Texts and Their Treatment, p 111)

Paul had need of books; how much more the growing Christian of today needs the stimulus of books for reference, for Bible study, for inspiration, for education, and for Christian living.
(National Church Library Association)

Stop by our Library and you’ll find inspiring books, books that are uplifting, books that are comforting, educational, and fun. Stop in today!


**PRAY FOR OUR
★ ★ ★ ★ ★
MILITARY**

- Jason Nowak, U.S. Air Force, Iraq
- Bill Dorsheimer, U.S. Navy
- Jon Keogh, U.S. Army, Iraq
- Rudy McEnry, U.S. Army
- Pat Werely, U.S. Army,


- Aaron Blair, U.S. Air Force
- Matthew Decker, U.S. Army
- Devan Jabcuga, U.S. Air Force
- John McGovern, U.S. Marine
- Timothy Filkins, U.S. Air Force, Ethiopia

ROOM REQUEST FORMS
Are available in the office on the bulletin board.

FOR SECURITY ISSUES
please remember to let the office know if you change or cancel your meeting date and/or time.



COFFEE HOUR



We are always in need of baked goods. If you’re making a batch of goodies for your family, make an extra batch and bring it down to the church and throw it in the freezer. Thank you!



Christian Education
News

NEWS FROM CHRISTIAN ED

Well here we are, one month into the new year and everything in the Christian Ed department is buzzing.

Michael and I have moved into our new office, come and visit us. Murals have been started in the 4th, 5th and 6th grade room and feet tracings will be appearing on a wall in the building. It's your job to find them and watch them grow into a ????. Let us know when you guess!

The last 2 Sundays in January the Sunday School classes worked on learning the Lord's Prayer. This will be something that the teachers will be reinforcing and starting the class with for the rest of the year. Use it as a spring board for discussion about prayer at home.

Coming in February and March our classes will be focusing on Lent. Specifically the path Jesus took to the cross. This is a very important part of the church calendar, we hope to have all of our Sunday school children participate in all aspects of the program. The lessons in the classrooms for February 12, 19 and 26th will be as follows:

Jesus is condemned - Matthew 27:11-14, 24, 26b

Jesus takes up the cross - Mark 15:16-20

Simon helps Jesus - Matthew 27:32

Jesus meets the women - Luke 23: 27-31

Jesus is stripped of his Clothes John 19: 23-25a

Jesus is nailed to the cross- Luke 23:32-34a, 39-43

Jesus see his mother - John 19:25b-27

Jesus dies - Luke 23:44-49

On March 11th and 19th, all of the classes will walk "the path" throughout the building and experience centers at each step, where they will do an activity and discuss what Jesus' experience means to them in their lives. March 25th will be our traditional Pretzel Sunday for the older children. All the classes will participate in activities discussing the symbol of the cross. We will also be preparing for Palm Sunday. Palm Sunday will be the culmination of our Lenten project. The congregation will participate with the children in a Power Point presentation telling the story of Jesus' path to the cross.

In addition to the Sunday school's Lenten experience there will be a chance for the adults to come together during lent. The program will be Praying with Mind, Body and Soul. Starting on Wednesday, February 29th and for the next 5 Wednesdays at 6:30 pm. There will be a soup and bread supper with a program to follow.

Michael and I are looking forward to the next few months of exciting happenings here at Wayside.
Blessings, Maria

BOOK DISCUSSION GROUP



"The Girl in the Blue Beret" by Bobbie Ann Mason is our choice read for February. During World War II many US pilots were shot down or parachuted behind enemy lines. They were often rescued by French Resistance Fighters. Marshall Stone was one of these pilots and after his 60th birthday decides to revisit France and try and retrace what happened and find some of the folks who helped him. While the story is fiction, it is based on truth...the story of the author's father-in-law and his experiences in WW II.

Everyone is invited to join us for some lively discussion about the books read and other topics of interest to the group. **We are meeting on the third Tuesday of the month.** So join us on Tuesday, February 21st at 7 PM. You won't be sorry. We are always looking for books to discuss, so if you have a favorite bring it to a meeting and suggest we all read and discuss it.



SOUPER BOWL OF CARING

MORE THAN 20 YEARS AGO, Souper Bowl Of Caring began with a simple prayer from a single youth group: “Lord, as we enjoy the Super Bowl football game, help us to be mindful of those without even a bowl of soup to eat.” Since that day, more than \$71 million has been raised for local charities across the country through Souper Bowl of Caring. It has become a powerful movement that is transforming the time around

Super Bowl weekend into the nation’s largest celebration of giving and serving.

Through this mission, young people learn what it’s like to make a positive difference in the world-as they collect food, raise money and volunteer to work in charities that provide shelter to the homeless, food to the hungry and compassion to those in need.

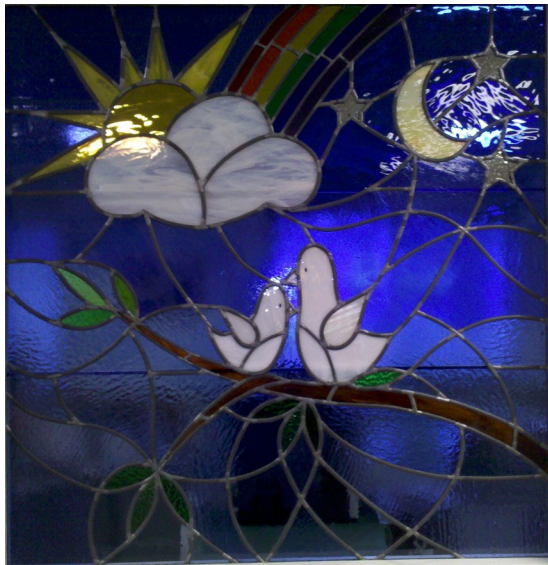
Be part of this movement that is sharing God’s love with those n need. Please give generously on Souper Bowl Sunday, February 5th. Every dollar donated goes to local food pantries.

QUILT FOR THE LORD & MONDAY EVENING STITCHERS (STITCHIN’ II)

Quilt for the Lord meets every Wednesday from 10:00 a.m. to 3:00 p.m. in Room 110. We are not just quilters, we are also knitters and scrappers. Everyone is welcome to join us.

The **Monday Evening Stitchers (Stitchin’ Time II)** is on winter hiatus. Watch for the May Waysider and their resume date.

If you know of a church member that would benefit from being wrapped in the warmth of one of our quilts, or have any questions, please call the office or contact either Shirley 649-0736 or Mary Lou 863-9347.



DEDICATION

On January 15th during the service, we dedicated the stained glass window in Memory of George Wilson. We are grateful for the thoughtfulness of his wife Audrey, and their family, who have glorified God’s name and facilitated the work of the church through the gift of a beautiful stained glass window. May we show our thankfulness and remember George fondly each time we look upon it. Make sure you stop down to the office to see it for yourself.

WELCOME TO OUR NEWLY BAPTIZED



Kendall Morgan Koch, daughter of Michael and Chelsey Koch. Kendall is the granddaughter of secretary Julie Horwood and great-granddaughter of Shirley Vandepoll.



Will be held on Saturday, February 18th at 10:00 AM. If you have been considering becoming a member of Wayside here’s your chance. Please call the office to let us know if you will be attending or if you have any questions.



The Mission/Outreach and Christian Educations committees are very excited to bring the *Turn on the Tap* clean water project to Wayside.

This program, organized by Samaritans Purse, is designed to bring clean water to some of the almost 900 million people around the world who live without it every day. Here in the US we take clean water for granted, and can lose sight of the overwhelming need around the world. The Turn on the Tap project strives to provide wells, community filters and household filters to communities in need around the world. They also supply emergency water relief in times of natural disaster, war, or other extreme circumstances.

To bring Turn on the Tap to Wayside, the Sunday School children have been learning some facts about water, and preparing for our big launch on February 5th, so please mark your calendars for this great opportunity to provide a basic need to many struggling communities around the world.

Clean water provides one of the most basic needs in health and hygiene and no one should have to go without it.

As we all know, any mission needs money in order to make a difference. We will be collecting money to donate to Turn on the Tap throughout the month of February. 100% of the money collected will be donated to Samaritans Purse with the sole purpose of providing clean water through the Turn on the Tap program. As little as \$100 can make a huge difference to a family in need, so lets see how many families Wayside can save!

If you have any questions about the Turn on the Tap program please don't hesitate to contact me at StephSmithMission@gmail.com, in church, or by phone at 997-3313.

Blessings,
Stephanie Smith

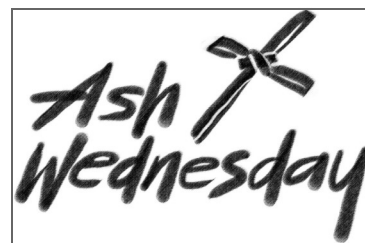


SHROVE TUESDAY AND ASH WEDNESDAY

Shrove Tuesday is February 21! It is the day before Ash Wednesday, which marks the beginning of Lent. The word "shrove" comes from the English verb "to shrive" which means "to confess." Historically, the six weeks before Easter (which is called "Lent") was thought of as a time of sacrifice and abstinence. In preparation for Holy Week and the death of the Christ, during Lent families abstained from rich foods. They made

their confessions on Tuesday and used up all the remaining rich food in the house. The traditional meal to use up butter and flour and sugar and oil is pancakes! That's why Shrove Tuesday is also known as "Fat Tuesday" - because it is the day to eat up all the fat in the house!

We will celebrate Shrove Tuesday with a Pancake Supper here. If you can help, please call Kathy Lantzy, Chair of the membership Committee. Remember, the day after Shrove Tuesday is Ash Wednesday. We will have a service of worship in the sanctuary at 7:30 pm to usher in the season of Lent.





Heifer Women's Lambing Project

April 13 – 16, 2012
Overlook Farm, Rutland, MA (central)

Join women of this Presbytery and women from across the country to watch a lamb take its first steps and reflect on the new beginnings that Heifer brings to millions of families around the world. We will participate in the daily rhythms of a working farm learning basic animal husbandry skills with specific focus on the birthing process of goats, sheep, swine, cattle, rabbits and the hatching of chicks.

A blend of facilitated discussions, experiential hands-on learning activities and direct interaction and work with farm animals will help us also understand the mission of Heifer International and appreciate the lives of those helped by the organization. It's a wonderful way to spend your spring vacation, learn more about Heifer and how animals help lift families out of poverty in the camaraderie of a diverse group of women.

Group is limited to 16 participants. Registration is \$475.

For more details, contact Elena Delgado at #860-2881 or via e-mail at elenad@verizon.net. You can also speak to Joan at Overlook Farm at #508-886-2221.

The **Women's Livestock Birthing at Overlook Farm** may include:

- Courses on birthing, pre-natal and post-natal care of livestock
- Nighttime birth checks
- An opportunity to explore Heifer's work throughout the world
- Educational sessions focusing on sustainable agriculture
- Culinary and food preservation techniques

And the big question— *Will I definitely see a birth?*

You will most likely see one species of animal give birth but there are no guarantees as Overlook does not induce birth. The program provides a plethora of learning opportunities (and fun!) regardless of the births.

Registration Information


Participants: Women ages 16 (those under 18 must be accompanied by an adult) and older of all backgrounds and experiences. The group is limited to 16 participants.

Per Person Tuition Fees: \$475 (**not tax-deductible**) due upon registration and is made directly to Heifer Overlook Farm on a first-come first-served basis. Please identify your participation as a member of WNY Presbytery.

Tuition Fee Includes: Educational programming including work projects, shared lodging in the bunkhouse and meals (dinner the first night to breakfast the last day).

Transportation to Overlook Farm: Participants must provide their own transportation to farm. Carpooling will be arranged.

FEBRUARY 2012

SUNDAY	MONDAY	TUESDAY	WEDNESDAY	THURSDAY	FRIDAY	SATURDAY
			1 FEBRUARY 10:00 AA 10:00 Quilt for the Lord 7:00 Deacons 7:30 Recovery	2 12:30 Course Miracles 7:30 Choir	3 9-3 Southtown Teachers 10:00 A.A.	4
5 SOUPER BOWL OF CARING FAMILY SUNDAY (Children attend Church) 9:30 Service & Communion 10:30 Coffee Hour 10:30 PNC	6 6:00 Finance Meeting	7 12:00 Bible Study 7:00 Music & Worship 7:00 Evening Bible Study	8 9:00 Staff 10:00 AA 10:00 Quilt for the Lord 3:30 P/A 6:00 Property 7:30 Recovery	9 12:30 Course Miracles 7:30 Choir	10 10:00 A.A.	11
12 9:30 Service 9:30 Sunday School 10:30 Coffee Hour	13 6:00 Mission/Outreach 6:30 CE	14 Wayside 15 articles due 9:30 Stephen Ministers 12:00 Bible Study 7:00 Evening Bible Study	15 10:00 AA 10:00 Quilt for the Lord 7:00 Session 7:30 Recovery	16 12:30 Course Miracles 7:30 Choir	17 10:00 A.A.	18 10:00 New Members Class
19 9:30 Service 9:30 Sunday School 10:30 Coffee Hour	20	21 12:00 Bible Study 4-8 Shrove Tuesday-Pancake Dinner 7:00 Evening Bible Study 7:00 Book Club	22 ASH WEDNESDAY 9:00 Staff 10:00 AA 10:00 Quilt for the Lord 7:30 Service 7:30 Recovery	23 12:30 Course Miracles 7:30 Choir	24 10:00 A.A.	25 
26 9:30 Service 9:30 Sunday School 10:30 Coffee Hour	27	28 9:30 Stephen Ministers 12:00 Bible Study 7:00 Evening Bible Study	29 10:00 AA 10:00 Quilt for the Lord 10:00 Memorial 6:30 Soup Supper & Lenten Learning			

**ELDERS
&
DEACONS**

****ELDERS**

Jim Barry
Janet Brooks
Barbara Broomell
Nancy Cuoco
Michael Edwards
Nancy Hutchison
Tim Jerome
Kathy Lantzy
Bonnie Moran
George Patterson
Shirley Vandepoll

****DEACONS**

Kim Carlson
Pam Decker
Meghan Dye
Joanne England
Colleen Griffin
Debbie Hurd
Joan Kelly
Richard Owen
Cheryl Panfil
Rhoda Peace
Debbie Tyler
Don Thiry
Sue Whelan
Audrey Wilson

CLERK OF SESSION
Maria Glass

Wayside Presbyterian Church
5017 Lake Shore Road
Hamburg, NY 14075

NON-PROFIT ORGANIZATION
US POSTAGE PAID
HAMBURG, NY 14075
Permit #2

Change Service Requested



Phone: 716-627-2150
Please call and listen to the messages.



E Mail
waysidechurch@hotmail.com



Dial-A-Prayer 627-2150



Fax: 716-627-5162



www.waysidepch.org

WAYSIDE STAFF

Temporary Pastor
Parish Associate, Retired
Treasurer
Financial Secretary
CE-Co Directors

Clerk of Session
Bell Choir
Librarian
Custodians

Rev. Amy Jelensperger, pastoramy@hotmail.com
Rev. Nancy Bassett
Pam Decker
Julie Horwood, waysidechurch@hotmail.com
Michael Edwards, medwards.wayside@gmail.com
Maria Glass, clerkofsession@hotmail.com
Maria Glass, clerkofsession@hotmail.com
Bruce Decker
Karen Peiffer
Kim Carlson
Al Peiffer